



2019

# ABOUT US

---

40 years ago, when we first started to produce goods for the Scaffolding sector, we were very excited. Our first customer, SGB, informed us that those were the safety parts. From that moment on we continuously improved ourselves and our products, always keeping in mind the safety criteria.

At the moment ARI produces over 200 different types of products and exports them to over 40 countries worldwide. Our company does not only provide the quality goods for Scaffolding and Formwork sector, but also undertakes the role of product developer for various systems.



## CASTING

---

Our casting facilities include both the Disamatic lines with vertical casting method, and also the horizontal casting lines. The casted products are mainly produced from Ductile Cast Iron, Malleable Cast Iron and Steel. The possibility to choose the necessary material according to the application and working conditions of each and every part provides our customers a competitive advantage. Due to this wide range of materials, there is a possibility to produce more high-tech mounted parts, where different material is used for every sub-piece.

## FORGING

---

Realizing that certain parts have to be produced using the forging method and due to the increasing demand, in 2014 we added the forged parts to our product range. The parts that certain suppliers were producing using machining and welding methods, are now produced by ARI by forging the part as a single piece.

At the moment we possess both friction press and hammering methods of forging.



# MACHINING

---

ARI experienced all the stages of development of casting technology: from manual production of casting tooling and core boxes to CNC-machining of metal tooling and core boxes at our own Machining Department.

Due to the high demand we increased the number of our CNC-lathe and CNC-milling machines, and on 25 April 2011 we opened our own CNC-machining atelier.



# INNOVATION

---

This is our most defined competitive advantage: we use our experience and engineering infrastructure as a driving force for innovation which is reflected in the goods that we produce.

Our working mentality could be considered as a Publicly Open Engineering Office which underlines the fact that we are much more than just a producer.

*Let's design your dreams together!*

# MISSION & VISION

---

We create innovative, design-driven and technically excellent products and services for Scaffolding and Formwork sector.

To become the preferred manufacturer and customized solution provider in the Formwork and Scaffolding sector.



7.078.580 products  
were produced in 2018

## Europe's Most Modern Foundry with 6 Disamatic Lines

---

Flexible Solutions for Complex Projects

The Policy Of Standards Of **ARI LTD** Defines  
The Basic Rules For Operational Methods.  
Subsequently Created Quality Management  
Systems Guarantee The Fulfillment Of Quality  
Goals In Every Aspect Of Production. The **ARI LTD**  
Employees Are Continuously Working On  
Improving The Quality Of Products And Services  
In Line With Those Defined Goals.





Page 5-6

### SCAFFOLDING SYSTEM ACCESSORIES

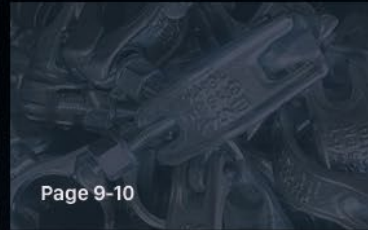
- Cuplock
- Frame (Facade) Scaffolding
- RingLock
- Scaffolding Spigot Pins EN74-2



Page 7-8

### BASE / HEAD JACK

- Adjusting Nut
- Adjusting Tube
- Adjusting Fork



Page 9-10

### COUPLERS

- Couplers EN74-1
- Scaffolding Spigot Pins EN74-2



Page 11-14

### FORMWORK FRAMED PANEL ACCESSORIES

- Couplers Clamps
- Bolts
- Strut (Pull Push Prop) Head
- Corners
- Plastic Plywood Plugs



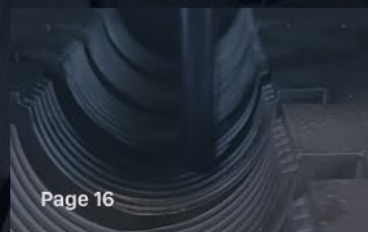
Page 15

### TIMBER BEAM FORMWORK ACCESSORIES



Page 16

### CLIP FORMWORK ACCESSORIES



Page 16

### VARIOUS FORMWORK ACCESSORIES



Page 17-18

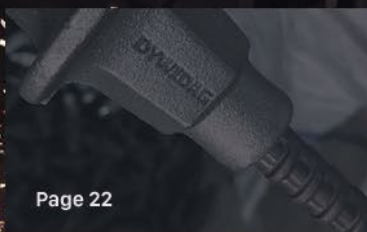
### SLOPE NUT



Page 19-21

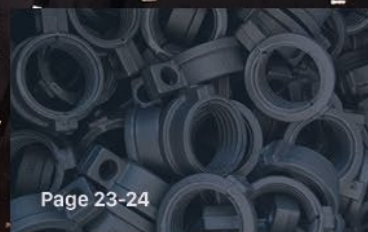
### TIE ROD ACCESSORIES

- Tie Rod Nuts 15/17
- Tie Rod Nuts 20
- Tie Rod Nuts 26 / 30
- Square SlopeNut
- Round SlopeNut
- Tie Rod



Page 22

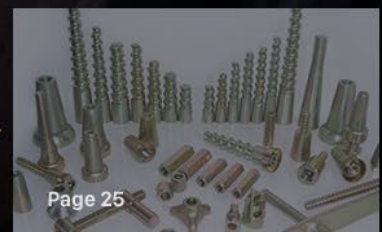
### WATERSTOPPERS



Page 23-24

### PROP ACCESSORIES

- Prop Nut
- Prop Sleeves
- Strut Head (Pull Push Prop)
- Prop Nut Suporter
- Drop Head



Page 25

### CLIMBING AND ANCHORAGE SYSTEM ACCESSORIES

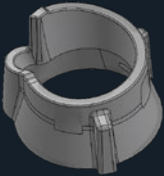

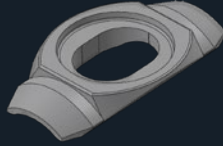
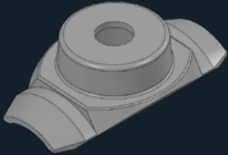
# Scaffolding System Accessories

## Cuplock Scaffolding System Accessories



The most critical detail in the cup-lock system is the perfect interaction of the 3 components: Ledger Blade, Bottom Cup and Top Cup. If those parts are produced without taking into account their interaction, the final user may experience huge problems.

Due to the fact that the Top Cup is subjected to impact hits, it has to be produced from the material that is resistant to minus degrees. That's why ARI produces the Top Cup from the Malleable Cast Iron, which guarantees the resistance of the part even at -50°C. Some providers produce the Top Cup using the forging method. The forged Top Cup has the resistance but does not have the ideal geometry, so the most correct method is to produce casted Top Cup from Malleable Cast Iron.

Moreover, using the Diagonal Ledger Blade is a cheaper and more efficient solution if compared to the couplers. The Diagonal Ledger Blade will increase the reliability of your Scaffolding and will decrease your costs comparing to using the couplers.

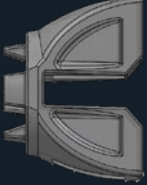

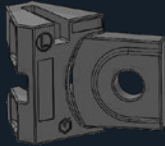

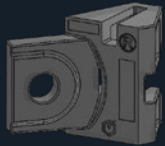
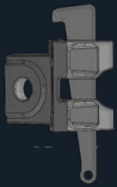




				
<b>Top Cup - T</b>	<b>Top Cup - S</b>	<b>Bottom Cup (4mm)</b>	<b>Paddle</b>	<b>Diagonal Paddle</b>
Product No : 030T	Product No : 030S	Product No : 032	Product No : 031	Product No : 033
Material : Malleable	Material : Ductile	Material : Sheet Steel	Material : Forged Steel	Material : Ductile
Weight : 0.465	Weight : 0.485	Weight : 0.200	Weight : 0.250	Weight : 0.360

## H Type Scaffolding System Accessories

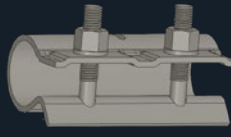
	
<b>Scaffolding Pin</b>	<b>Scaffolding Pin</b>
Product No : 057	Product No : 057
Material : Machined	Material : Forged Steel
Weight : Please ask	Weight : Please ask

# RingLock Scaffolding System Accessories

ARI has provided the solutions for the ring-lock systems in over 40 countries worldwide with most prominent results. The accessories produced by ARI were used in cold and hot climates, as an example, in building of Petroleum Refineries, and as a feedback the complete customer satisfaction was obtained.

 <p><b>Ledger End (Without Wedge)</b> Product No : 040 Material : Steel Casting Weight : 0.375</p>	 <p><b>Ledger End (With Wedge)</b> Product No : 040W Material : Steel Casting Weight : 0.485</p>	 <p><b>Ledger Diagonal End Left (Without Wedge)</b> Product No : 041 Material : Ductile Weight : 0.620</p>	 <p><b>Ledger Diagonal End Left (With Wedge)</b> Product No : 041W Material : Ductile Weight : 0.770</p>	 <p><b>Ledger Diagonal End Right (Without Wedge)</b> Product No : 042 Material : Ductile Weight : 0.620</p>
 <p><b>Ledger Diagonal End Right (With Wedge)</b> Product No : 042W Material : Ductile Weight : 0.770</p>	 <p><b>Ledger End Wedge</b> Product No : 043 Material : Sheet Steel Weight : 0.110</p>	 <p><b>Ledger End Flange (For Ø48 Tube)</b> Product No : 044 Material : Sheet Steel Weight : 0.540</p>	 <p><b>Ledger End Flange (For Ø60 Tube)</b> Product No : 044 Material : Sheet Steel Weight : 0.640</p>	 <p><b>Ledger End Flange R Type (For Ø48 / Ø60 Tube)</b> Product No : 044 Material : Sheet Steel Weight : 0.440</p>

# Scaffolding Spigot Pins EN74-2

 <p><b>Joint / Spigot Pin Casting</b> Product No : 055 Material : Ductile Weight : 0.570</p>	 <p><b>Joint / Spigot Pin Tube Pressed</b> Product No : 056 Material : Steel Weight : 0.575</p>	 <p><b>Joint / Spigot Pin Forged</b> Product No : 058 Material : Forged Weight : 1.200</p>	 <p><b>Sleeve Coupler</b> Product No : 059 Material : Sheet Steel Weight : 1.181</p>
---	--	---	--

# Base / Head Jack

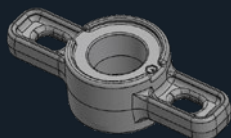
---

ARI considers safety as a main factor when designing the parts. Moreover, the parts are designed and produced according to the respective international standards. All the goods in this segment suit the EN74 and EN18928 standards, and show the resistance which is much over the demanded. Both the nuts, and the tubes are produces with maximum precision.

The necessary periodic tests are performed both internally, and also by the third-party institutions, ex. TSE (Turkish Standards Institute). You can find some test reports in the QUALITY section of our website. The jack nuts can be produced by casting and by forging. Furthermore, the nuts can be produced with casted thread or the thread can be machined by CNC.

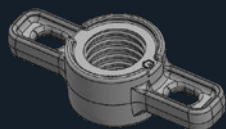


# Adjusting Nut



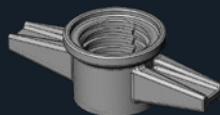
**Jack Nut Ø 27 mm  
(Without Thread)**

Product No : 351  
Material : Ductile  
Weight : 0.720



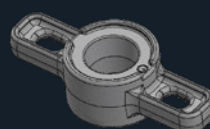
**Jack Nut Ø 35 mm  
(CNC Machined Thread)**

Product No : 351A  
Material : Ductile  
Weight : 0.620



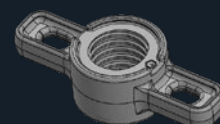
**Jack Nut Ø 35 mm  
(Casting Thread)**

Product No : 350  
Material : Ductile  
Weight : 0.305



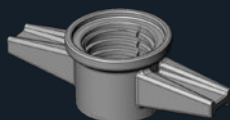
**Jack Nut Ø 38 mm  
(Without Thread)**

Product No : 381  
Material : Ductile  
Weight : 0.660



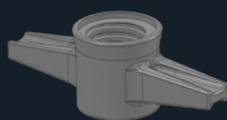
**Jack Nut Ø 38 mm  
(CNC Machined Thread)**

Product No : 381A  
Material : Ductile  
Weight : 0.600



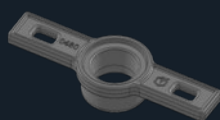
**Jack Nut Ø 38 mm  
(Casting Thread)**

Product No : 380  
Material : Ductile  
Weight : 0.400



**Jack Nut Ø 40 mm  
(Casting Thread)**

Product No : 400  
Material : Ductile  
Weight : 0.650



**Jack Nut Ø 48 mm  
(Without Thread)**

Product No : 480  
Material : Ductile  
Weight : 0.985



**Jack Nut Ø 48 mm  
(CNC Machined Thread)**

Product No : 480A  
Material : Ductile  
Weight : 0.900



**Jack Nut Ø 48 mm  
(Without Thread)**

Product No : 481  
Material : Ductile  
Weight : 1.100



**Jack Nut Ø 48 mm  
(CNC Mach. Thread)**

Product No : 481A  
Material : Ductile  
Weight : 1.000



**Jack Nut Ø 48 mm  
(Without Thread)**

Product No : 482  
Material : Ductile  
Weight : 1.200



**Jack Nut Ø 48 mm  
(CNC Machined)**

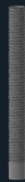
Product No : 482A  
Material : Ductile  
Weight : 1.100

# Adjusting Tube



**Threaded Tube Ø 35 mm**

Product No : 535  
Material : Steel  
Weight : 1.580



**Threaded Tube Ø 38 mm**

Product No : 538  
Material : Steel  
Weight : 1.600



**Threaded Tube Ø 40 mm**

Product No : 540  
Material : Steel  
Weight : 1.620



**Threaded Tube Ø 48 mm**

Product No : 548  
Material : Steel  
Weight : 2.650

# Couplers EN74-1

---

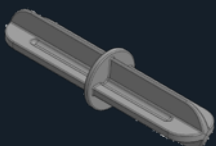
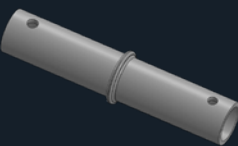

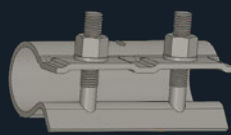
The double couplers produced by ARI were confirmed to be in the Class BB and the swivel couplers in the Class B as the result of the tests performed at the facilities of TSE (Turkish Standards Institute) in Gebze, Republic of Turkey. Those two respective Classes are the top for each respective type of Couplers. During this process ARI has supported the TSE in the development and procurement of the necessary equipment for this kind of testing. As demanded by the Standards, ARI is periodically performing all the necessary internal controls and tests.

Our products together with our Ring-Lock accessories were used at the construction of biggest Petroleum Refineries worldwide, and were highly appreciated by the Scaffolding professionals.

## Couplers EN74-1

				
<b>Toe Board Coupler</b>	<b>Drop Forged Doubled Coupler</b>	<b>Drop Forged Swivel Coupler</b>	<b>Drop Forged One Side (Half) Coupler</b>	<b>Fix Girder Gravlock (Beam) Coupler</b>
Product No : 046	Product No : 047	Product No : 048	Product No : 049	Product No : 052
Material : Forged Steel	Material : Forged Steel	Material : Forged Steel	Material : Forged Steel	Material : Forged Steel
Weight : 0.580	Weight : 1.165	Weight : 1.360	Weight : 0.600	Weight : 1.505
				
<b>Swivel Girder Gravlock (Beam) Coupler</b>	<b>Putlog Coupler</b>	<b>Sleeve Coupler</b>	<b>M12 Bolt + 22 mm Nut</b>	
Product No : 053	Product No : 054	Product No : 059	Product No : 048BN	
Material : Forged Steel	Material : Forged Steel	Material : Steel	Material : Steel	
Weight : 1.525	Weight : 0.650	Weight : 1.185	Weight : 0.650	

## Scaffolding Spigot Pins EN74-2

			
<b>Joint / Spigot Pin Casting</b>	<b>Joint / Spigot Pin Tube Pressed</b>	<b>Joint / Spigot Pin Forged</b>	<b>Sleeve Coupler</b>
Product No : 055	Product No : 056	Product No : 058	Product No : 059
Material : Ductile	Material : Steel	Material : Forged Steel	Material : Steel
Weight : 0.570	Weight : 0.575	Weight : 1.200	Weight : 1.181

# Formwork Framed Panel Accesories

## Formwork Framed Panel Couplers Clamps

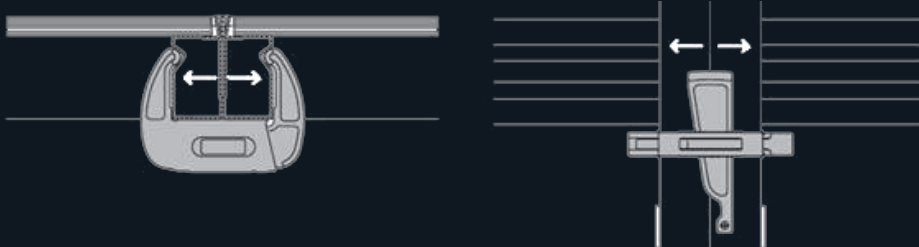
In this segment we are proud to be not only the producer, but also the developer of the parts. Upto this point we already have the experience of designing and development of more than 50 types of Clamps. The designing process starts with the design of Profile and goes into design of accessories, like clamps, nuts, etc.

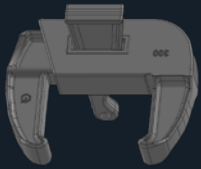
All our clamps are produced with the consideration of the working conditions. For example, all the wedges are produced by forging, to grant the necessary resistance to impact hits. Moreover, our clamps proved themselves in such hard climate conditions as Russia, Poland and Sweden. Most recently, we expanded our product range with 2 new parts.

One of them is MULTI CLAMP. This clamp can fit any separate type of panel, and also can be used for assembling two different types of panels of different formwork producers. This proves to be advantageous for the users at the construction site.

The other newly introduced product is the BFP clamp. The biggest strength of this clamp is the fact that its body is produced from the seamless tube profile. This detail makes this clamp one of the most resistant in the market.

	<b>Clamp Type</b>	<b>Suitable Profile Type</b>	<b>Tensile Force</b>
1-	300CP Clamp PFD Type BFD	[120* 60]	45,3 kN
2-	300 Clamp DB Type	[120* 60]	39,6 kN
3-	300 MU Clamp MU Type	[120* 60]	34,1 kN
4-	340 Clamp DK Type	[95* 20]	31,6 kN
5-	Clamp M Type	[95* 20]	31,3 kN





**Clamp DB Type**

Product No : 300  
Material : Ductile  
Weight : 3.100



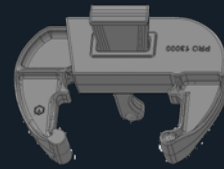
**Clamp Universal DB Type**

Product No : 300C  
Material : Ductile+Steel  
Weight : 5.600



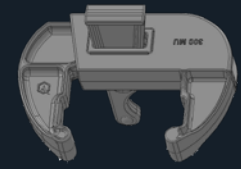
**Multifunction Clamp DB Type**

Product No : 300.MDB  
Material : Ductile + Forged Steel  
Weight : 5.800



**Clamp Pro13000**

Product No : Pro13000  
Material : Ductile+Malleable  
Weight : 3.400



**Clamp MU Type**

Suitable for all types ex. Framax  
Product No : 300MU  
Material : Ductile+Malleable  
Weight : 3.160



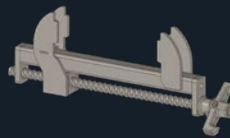
**Clamp DK Type**

Product No : 340  
Material : Ductile  
Weight : 1.225



**Clamp Universal DK Type**

Product No : 340C  
Material : Ductile+Steel  
Weight : 2.970



**Adjustanble Clamp DK Type**

Product No : 340.CDK  
Material : Steel  
Weight : 3.600



**Clamp M Type**

Product No : 320  
Material : Ductile  
Weight : 0.875



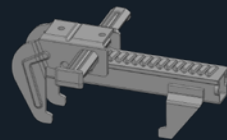
**Clamp Universal M Type**

Product No : 320C  
Material : Ductile  
Weight : 3.000



**Clamp PFD Type BFD**

Product No : 300CP  
Material : Steel  
Weight : 4.395



**Clamp PRS Type DRS**

Product No : 340CP  
Material : Steel  
Weight : 3.130

# Formwork Framed Panel Bolts

All the Connector Bolts are produced by forging and without any machining of the thread. The raw material used for the production is specifically elected to fit the requirements. Moreover, the tooling for the production is designed internally by ARI. Other than the current range of products we also design the Bolts according to the customer needs.

In the production of the Bolts we avoid the processes that can lower the resistance of the part, like welding or machining of the thread, and we continuously share the importance of this detail with our partners.

<b>Universal Fixing Bolt 10-25 cm (Total 36 cm)</b>	<b>Universal Fixing Bolt</b>	<b>Universal Fixing Bolt</b>
Product No : 115T	Product No : 115P	Product No : 115L
Material : Forged Steel	Material : Forged Steel	Material : Forged Steel
Weight : 0.695	Weight : 0.635	Weight : 0.650

<b>Panel Corner Connector</b>	<b>Universal Fixing Bolt 10-25 cm (Total 36 cm)</b>	<b>Panel Corner Connector</b>
Product No : 115V	Product No : 115TU	Product No : 115VL
Material : Forged Steel	Material : Forged Steel	Material : Forged Steel
Weight : 0.375	Weight : 0.695	Weight : 0.610

# Formwork Framed Panel Strut (Pull Push Prop) Head

The companies who produce the panels of different dimensions and attach the pull-push props both vertically and horizontally, it is a necessity to keep at least two (sometimes 4) different types of pull-push prop heads on stock.






With our newly designed pull-push prop head our customers now can use the props with 20mm, 40mm and 50mm profiles, attach them both vertically and horizontally, using only one single head type. This decreases many costs, such as purchasing tracking, stock tracking, etc.

Moreover, due to its design our head type provides additional durability and resistance to the formwork system, which improves the marketing strength of our customers.





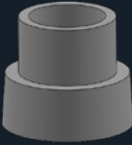
<b>Formwork Framed Panel Strut (Pull Push Prop) Head</b>
Product No : 250.3LU
Material : Steel
Weight : 2.400





# Formwork Framed Panel Corners

The weakest part of a formwork panel is its corner. This makes the usage of the steel casted corners a necessity, to protect the panel, especially for the companies who are in the renting business. Besides, if using the corners, the profiles can be cut at 90° instead of 45°. This provides the economy of both time and money. Furthermore, additional functions can be achieved with corners according to the necessities of the customer. Hereby we not only produce the parts, but if needed we can offer our customers a solution and a design.

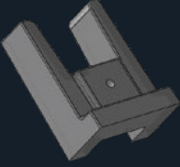



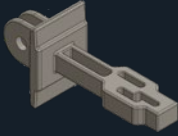
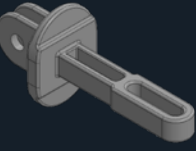







				
<b>Formwork Framed Panel Corners</b>	<b>Formwork Framed Panel Corners</b>	<b>Formwork Framed Panel Corners</b>	<b>Formwork Framed Panel Corners</b>	<b>Formwork Framed Panel Corners</b>
Product No : 300.K	Product No : 300.K	Product No : 300.K	Product No : 300.K	Product No : 300.K
Material : Steel	Material : Steel	Material : Steel	Material : Steel	Material : Steel
Weight : 0.977	Weight : 0.879	Weight : 1.365	Weight : 1.159	Weight : 0.760

# Various Plastic Plugs

				
<b>Plastic Plywood Plug – Body - MB</b>	<b>Plastic Plywood Plug – Cap - MC</b>	<b>Plastic Plywood Plug – Body - AB</b>	<b>Plastic Plywood Plug – Cap - AC</b>	<b>Water Barrier Plastic Cap</b>
Product No : P001.MB	Product No : P001.MC	Product No : P001.AB	Product No : P001.AC	Product No : 130.PLK.HP
Material : Plastic	Material : Plastic	Material : Plastic	Material : Plastic	Material : Plastic
Weight : 16.0 kg/1,000 pcs	Weight : 20.0 kg/1,000 pcs	Weight : 18.0 kg/1,000 pcs	Weight : 22.0 kg/1,000 pcs	Weight : 9.1 kg/1,000 pcs

			
<b>Safety Cap 8/16 Type 1</b>	<b>Safety Cap 16/30 Type 1</b>	<b>Safety Cap 8/16 Type 2</b>	<b>Safety Cap 16/30 Type 2</b>
Product No : P115.8.16	Product No : P115.16.30	Product No : P215.8.16	Product No : P215.16.30
Material : Plastic	Material : Plastic	Material : Plastic	Material : Plastic
Weight : 44.0 kg/1,000 pcs	Weight : 44.0 kg/1,000 pcs	Weight : 15.0 kg/1,000 pcs	Weight : 44.0 kg/1,000 pcs

# Timber Beam Formwork Accessories

 <p><b>Clips H 20</b></p> <p>Product No : 200 Material : Ductile Weight : 0.720</p>	 <p><b>Hook Set</b></p> <p>Product No : 220 Material : Malleable Weight : 0.805</p>	 <p><b>Hook Left</b></p> <p>Product No : 221 Material : Malleable Weight : 0.220</p>	 <p><b>Hook Right</b></p> <p>Product No : 222 Material : Malleable Weight : 0.220</p>	 <p><b>Support Head [WS 100;120;140]</b></p> <p>Product No : 250 Material : Ductile Weight : 2.280</p>
 <p><b>Support Head (Modified) [WS 100]</b></p> <p>Product No : 260 Material : Ductile Weight : 1.930</p>	 <p><b>Support Head Pin</b></p> <p>Product No : 254 Material : Forged Steel Weight : 0.330</p>	 <p><b>Support Head Wedge</b></p> <p>Product No : 255 Material : Sheet Steel Weight : 0.380</p>	 <p><b>Corner Head</b></p> <p>Product No : 230 Material : Ductile Weight : 2.680</p>	 <p><b>Corner Head Universal</b></p> <p>Product No : 240 Material : Ductile Weight : 3.300</p>
 <p><b>Wedge 19,5 mm</b></p> <p>Product No : 280 Material : Ductile Weight : 0.750</p>	 <p><b>Wedge 19,5 mm Forged Steel</b></p> <p>Product No : 290F Material : Forged Steel Weight : 0.930</p>	 <p><b>Wedge 19,5 mm</b></p> <p>Product No : 290 Material : Ductile Weight : 0.415</p>		



# Clip Formwork Accessories



**Panel Lock 8 mm**

Product No : 308  
 Material : Ductile  
 Weight : 0.530



**Panel Lock 10 mm**

Product No : 310  
 Material : Ductile  
 Weight : 0.530



**Panel Lock 10 mm (Small)**

Product No : 311  
 Material : Ductile  
 Weight : 0.520



**Formwork Pim**

Product No : 330  
 Material : Forged Steel  
 Weight : 0.100



**Formwork Pim Wedge**

Product No : 331  
 Material : Sheet Steel  
 Weight : 0.100



**Panel Lock 16 mm**

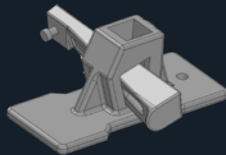
Product No : 311.ICM  
 Material : Ductile  
 Weight : 0.575

# Various Formwork Accessories



**Spring Clamp**

Product No : 410  
 Material : Sheet Steel  
 Weight : 0,420



**Cam Clamp**

Product No : 420  
 Material : Cast Iron  
 Weight : 0,430

# SlopeNut DIN 18216

---

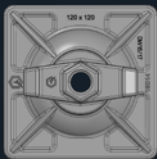
Our Slope Nuts are resistant to minimum loads required by DIN 18216:November 2017. Our product is especially demanded by the customers who work in the cold and tough conditions.

The nut has a movement range of 7°, which makes the mounting easier, especially in the conditions where mounting is hard due to uneven surface.

Moreover, due to special design the part is easy to repair, which increases the longevity. This is an important factor for the formwork renting companies.

## Square SlopeNut DIN18216

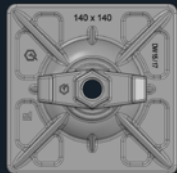
15/17



**Slope Nut 120x120  
15/17**

Product No : 120  
Material : Ductile+Steel  
Weight : 1.250

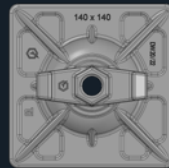
15/17



**Slope Nut 140x140  
15/17**

Product No : 140  
Material : Ductile+Steel  
Weight : 1.450

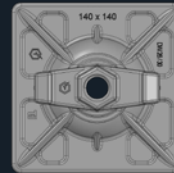
20/22



**Slope Nut 140x140  
20/22**

Product No : 140  
Material : Ductile+Steel  
Weight : 1.580

26/30



**Slope Nut 140x140  
26/30**

Product No : 140  
Material : Ductile+Steel  
Weight : 1.680

## Round SlopeNut DIN18216

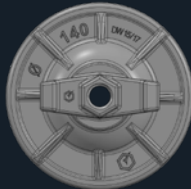
15/17



**Slope Nut Ø120  
15/17**

Product No : Ø120  
Material : Ductile+ Steel  
Weight : 1.180

15/17



**Slope Nut Ø140  
15/17**

Product No : Ø140  
Material : Ductile+ Steel  
Weight : 1.600

20/22



**Slope Nut Ø140  
20/22**

Product No : Ø140  
Material : Ductile+ Steel  
Weight : 1.780

26/30



**Slope Nut Ø140  
26/30**

Product No : Ø140  
Material : Ductile+ Steel  
Weight : 1.880

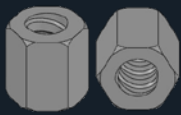
# Tie Rod Accessories DIN 18216

All the Tie Rod accessories are controlled for the break load both during the production and also periodically on stock basis.

All those tests are performed in accordance with **DIN 18216:November2017** standard. Besides, the parts are regularly tested by the independent institutions, like TSE (Turkish Standards Institute). You can find the results of those tests in the **QUALITY** section of our website.

Nomina Dimensions	Working Load	Ultimate Load
15/17	90 kN	190 kN
20/22	160 kN	345 kN
26/30	280 kN	580 kN

## Tie Rod Nuts 15/17 DIN18216



**Hexagonal Nut Ø27x30 mm  
Weldable**

Product No : 027  
Material : Steel  
Weight : 0.100



**Hexagonal Nut Ø27x50 mm  
Weldable**

Product No : 027  
Material : Steel  
Weight : 0.180



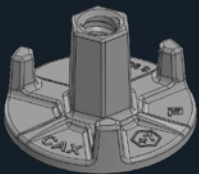
**Waler Wing Nut Ø 50 mm**

Product No : 050  
Material : Ductile  
Weight : 0.300



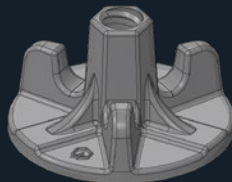
**Waler Wing Nut Ø 70 mm**

Product No : 070  
Material : Ductile  
Weight : 0.445



**Waler Wing Nut Ø 90 mm**

Product No : 090  
Material : Ductile  
Weight : 0.510



**Waler Wing Nut Ø 100 mm**

Product No : 100  
Material : Ductile  
Weight : 0.685



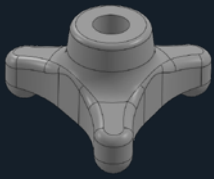
**Wing Nut -- 15**

Product No : 110  
Material : Ductile  
Weight : 0.350

**All products are according DIN 18216.**

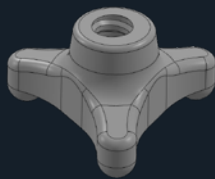
## Tie Rod Nuts 20 DIN18216

26/30



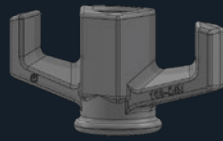
**Tie Rod Nut Ø 19 hole no thread**

Product No : 126  
Material : Forged Steel  
Weight : 0.905



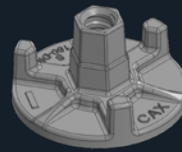
**Tie Rod Nut Ø 24 (Machined Thread)**

Product No : 126A  
Material : Forged Steel  
Weight : 0.725



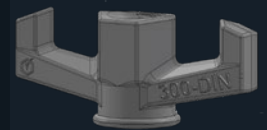
**Wing Nut -- 20**

Product No : 110 -- 20  
Material : Ductile  
Weight : 0.480



**Wing Nut Ø130**

Product No : 130 -- 20  
Material : Ductile  
Weight : 1,550



**Wing Nut -- 26**

Product No : 110 -- 26  
Material : Ductile  
Weight : 0.905

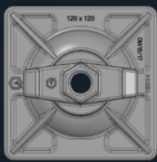
## Square SlopeNut DIN18216

15/17

15/17

20/22

26/30



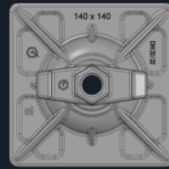
**Slope Nut 120x120 15/17**

Product No : 120 15/17  
Material : Ductile+Steel  
Weight : 1.250



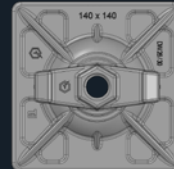
**Slope Nut 140x140 15/17**

Product No : 140 15/17  
Material : Ductile+Steel  
Weight : 1.450



**Slope Nut 140x140 20/22**

Product No : 140 20/22  
Material : Ductile+Steel  
Weight : 1.580



**Slope Nut 140x140 26/30**

Product No : 140 26/30  
Material : Ductile+Steel  
Weight : 1.680

## Round SlopeNut

15/17

15/17

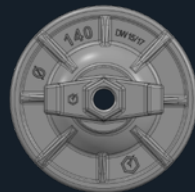
20/22

26/30



**Slope Nut Ø120 15/17**

Product No : Ø120 15/17  
Material : Ductile+ Steel  
Weight : 1.180



**Slope Nut Ø140 15/17**

Product No : Ø140 15/17  
Material : Ductile+ Steel  
Weight : 1.600



**Slope Nut Ø140 20/22**

Product No : Ø140 20/22  
Material : Ductile+ Steel  
Weight : 1.780



**Slope Nut Ø140 26/30**

Product No : Ø140 26/30  
Material : Ductile+ Steel  
Weight : 1.880

All products are according DIN 18216.

# Tie Rod DIN 18216

We offer the HOT-ROLLED, WELDABLE TIE ROD which is resistant to loads required by DIN 18216: November 2017.

Since the moment of launching the products it proved itself on the various projects and sites on 4 different continents.

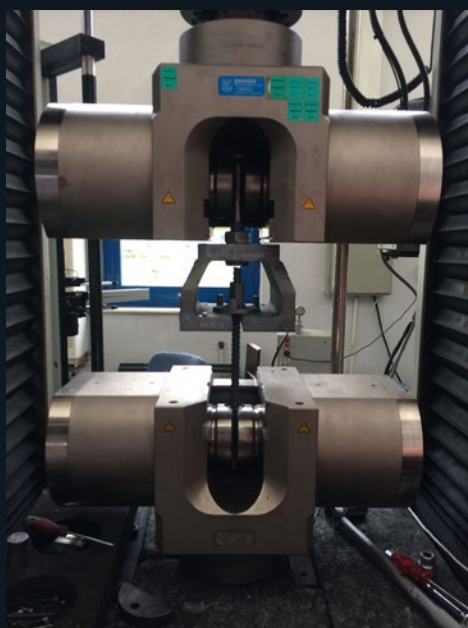
- Tested by Turkish Standards Institute  according to DIN 18216: November 2017

- Weldability tested by GSI SLV 

15/17

20/22

26/30



**CAX 15/17 with Nut 202,45 [kN]\***



**CAX 15/17 without Nut 204,92 [kN]\***

\*Tested by Turkish Standart Enstitut TSE according DIN 18216 November 2017

# WaterStoppers DIN 18216

We are guaranteeing the below conditions for all our Water Barriers:

- Resistance as required by DIN 18216:November 2017.
- Non-passing of water

These two details are critical, so if demanded we provide to our customers the 100% water non-pass testing.

15/17

15/17

20/22



**Water Stop**

Product No : 120  
Material : Ductile  
Weight : 0.395



**Water Stop**

Product No : 130  
Material : Ductile  
Weight : 0.550



**Water Stop**

Product No : 130  
Material : Ductile  
Weight : 1,210

Nominal Dimensions	Working Load	Ultimate Load
15/17	90 kN	190 kN
20/22	160 kN	345 kN

All products are according DIN 18216.

# Prop Accessories

## Prop Nut

We supply the prop nuts and other prop accessories to the biggest European prop producers. We gathered an immense experience in this field. You can find the results of some tests in the QUALITY section of our website. The nuts can be produced in any needed diameter, from 60mm to 102mm. Our nuts proved themselves in the hardest conditions, and are preferred not only by the purchasing officers but also by the construction site managers.



**Prop Nut Ø 50 mm without Thread**  
 Product No : 051  
 Material : Ductile  
 Weight : 0.600



**Prop Nut Ø 50 mm CNC Machined Threaded**  
 Product No : 051A  
 Material : Ductile  
 Weight : 0.500



**Prop Nut Ø 60 mm without Thread**  
 Product No : 061  
 Material : Ductile  
 Weight : 0.570



**Prop Nut Ø 60 mm CNC Machined Threaded**  
 Product No : 061A  
 Material : Ductile  
 Weight : 0.480



**Prop Nut Ø 60 mm with Casted Thread**  
 Product No : 060  
 Material : Ductile  
 Weight : 0.450



**Prop Nut Ø 60 mm with handle**  
 Product No : 060H  
 Material : Ductile  
 Weight : 0.740



**Prop Nut Ø 60 mm with or without handle**  
 Product No : 060F  
 Material : Forged Steel  
 Weight :



**Prop Nut Ø 76 mm with or without handle**  
 Product No : 076F  
 Material : Ductile  
 Weight :



**Prop Nut Ø 76 mm without Thread**  
 Product No : 076  
 Material : Ductile  
 Weight : 0.950



**Prop Nut Ø 76 mm (CNC Machined Thread)**  
 Product No : 076A  
 Material : Ductile  
 Weight : 0.835



**Prop Nut Ø 76 mm (CNC M. Thread) (With Handle)**  
 Product No : 076AH  
 Material : Ductile  
 Weight : 1.150



**Prop Nut Ø 60 mm**  
 Product No : 60  
 Material : Ductile  
 Weight : 1.250



**Prop Nut Ø 76 mm**  
 Product No : 76  
 Material : Ductile  
 Weight : 0.650



**Prop Nut Ø 89 mm**  
 Product No : 89  
 Material : Ductile  
 Weight : 1.905



**Prop Nut Ø 102 mm**  
 Product No : 102  
 Material : Ductile  
 Weight :



**Prop Nut Ø 60 mm**  
 Product No : 062  
 Material : Ductile  
 Weight : 1.720



# Prop Sleeves



**Threaded Tube Ø 50 mm**

Product No : 550  
 Material : Steel  
 Weight : 0.800



**Threaded Tube Ø 60 mm**

Product No : 560  
 Material : Steel  
 Weight : 0.800



**Threaded Tube Ø 76 mm**

Product No : 576  
 Material : Steel  
 Weight : 1.400



**Threaded Tube Ø 89 mm**

Product No : 589  
 Material : Steel  
 Weight :



**Threaded Tube Ø 102 mm**

Product No : 5102  
 Material : Steel  
 Weight :

# Strut Head (Pull Push Prop) Prop Nut Supporter



**Pull Push Prop Prop Nut Supporter for Ø60 Nut**

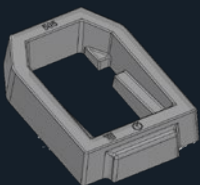
Product No : 013  
 Material : Steel  
 Weight : 0.105



**Pull Push Prop Prop Nut Supporter for Ø76 & Ø89 Nut**

Product No : 016  
 Material : Steel  
 Weight : 0.150

# Drop Head (505TYP1/505TYP2)



**Drop Head Casting Part Typ 1**

Product No : 505Typ1  
 Material : Ductile  
 Weight : 1.050



**Drop Head Casting Part Typ 2**

Product No : 505Typ2  
 Material : Ductile  
 Weight : 1.000

# G Lock



**G Hook**

Product No : 076G  
 Material : Steel Bar  
 Weight : 0.780

# Climbing and Anchorage System Accesories

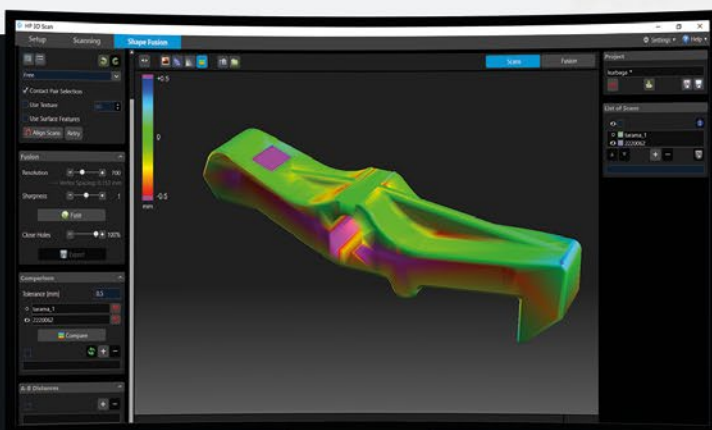
 <p><b>Climbing Cone 322</b></p> <p>Product No : 322-C Material : Steel Weight : 0.950</p>	 <p><b>Position Cone</b></p> <p>Product No : 322-P Material : Steel Weight : 0.430</p>	 <p><b>Sealing Sleeve</b></p> <p>Product No : 322-S Material : Plastic Weight : 0.008</p>	 <p><b>Anchor</b></p> <p>Product No : 317 Material : Steel Weight : Please Ask</p>
 <p><b>Anchor Key</b></p> <p>Product No : 318 Material : Steel Weight : Please Ask</p>	 <p><b>Hanger Ring</b></p> <p>Product No : 319 Type 1 Material : Steel Weight : Please Ask</p>	 <p><b>Hanger Ring</b></p> <p>Product No : 319 Type 2 Material : Steel Weight : Please Ask</p>	 <p><b>Bolt</b></p> <p>Product No : 323 Material : Steel Weight : 0.450</p>
 <p><b>Climbing Cone 321</b></p> <p>Product No : 321 Material : Weight : 1.025</p>	 <p><b>Anchor Plate Ø 80 15/17</b></p> <p>Product No : 715 Material : Ductile Weight : 0.615</p>	 <p><b>Anchor Plate Ø 100 20/22</b></p> <p>Product No : 720 Material : Ductile Weight : 0.880</p>	 <p><b>Anchor Plate Ø 120 26/30</b></p> <p>Product No : 726 Material : Ductile Weight : 1,260</p>

# Design. Produce. Control.

Your product is designed using the most innovative technologies



Quick prototyping at 3D printers leads to quick results



3D scan controlling assures no any detail is missed



*Contact us!*



**Özgür Karakuş**

General Manager

Gsm: +90 532 294 7090

karakus@ariltd.com



**Evgheni Doncev**

Head of Marketing & Purchasing

Gsm: +90 538 771 8044

doncev@ariltd.com



[www.ariltd.com](http://www.ariltd.com)

MADE IN EUROPE, MADE IN TÜRKİYE - İSTANBUL  
by Arı Ltd